



## NORDIC CCM0830 SERIES

### MODULAR CUBED ICE MAKER



Ice maker shown on B842SS bin

Protected by Agion



## FEATURES

**High-yield** – Produces up to 968 lbs. (440 Kgs.) of ice/day

**Durable** – Constructed from corrosion-resistant stainless steel

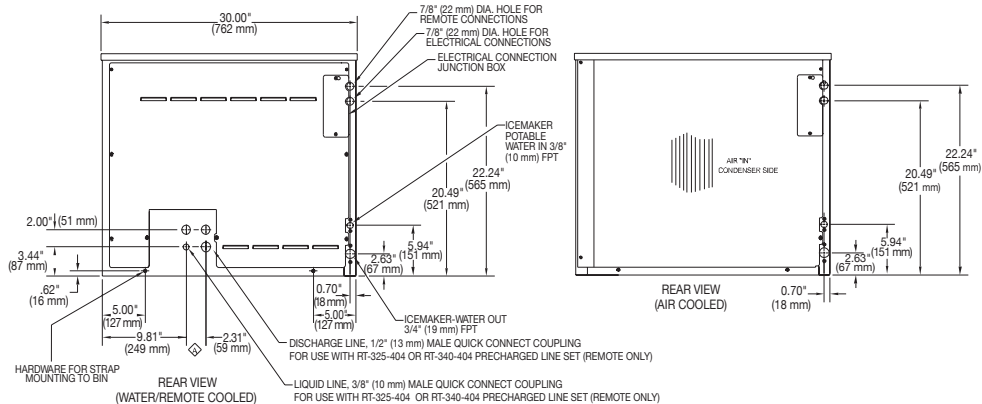
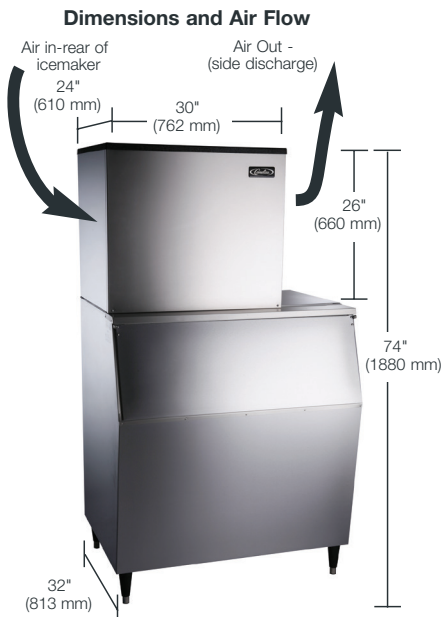
**Antimicrobial** – Built-in Agion Antimicrobial product protection effective against mold, mildew, and fungus

**Small footprint** – Ultra low-profile - only 26" (660 mm) tall

**Smart** – Harvest assist reduces utility consumption

**Customizable** – Choice of full or half cube size

**Easy to maintain** – No air filter to clean or replace



**OPERATING LIMITS**

Ambient Temp. Range Air & Water	50° - 110°F (10° - 43°C)
Water Temp. Range	40° - 110°F (4.5° - 43°C)
Water Pressure Ice Maker Water in	Min. 20 psi (1.4 bar)
	Max. 60 psi (4.1 bar)
Condenser Inlet Water (Water cooled only)	Min. 20 psi (1.4 bar)
	Max. 60 psi (4.1 bar)

MODEL NO.	Cond. Unit	Ice Prod. per 24 hrs. at 70° Air / 50° Water lbs. (Kgs.)	Ice Prod. per 24 hrs. at 90° Air / 70° Water lbs. (Kgs.)	Water Used-Gals. (Ltrs.) per 100 lbs. of ice 90° Air / 70° Water		Kilowatts Used per 100 lbs. of ice 90° Air / 70° Water	Heat Rejection (Btuh)	Electrical Rating	Min. Circuit Amp.	Fuse Size
				Ice Prod. Use	Cond. Use					
CCM0830A*21	Air	957 (435)	698 (317)	21.8	n/a	5.8	14464	208-230/60/1	13.0	20
CCM0830WF22	Water	955 (434)	855 (389)	24.9	132	4.0	14816	208-230/60/1	9.8	20
CCM0830RH21	Remote	968 (440)	826 (375)	20.0	n/a	5.3	16371	208-230/60/1	12.3	20
CCM0830AH51	Air	918 (417)	641 (291)	21.0	n/a	6.0	13576	230/50/1	11.7	16
CCM0830W*51	Water	947 (430)	853 (388)	25.7	124	4.0	14810	230/50/1	9.2	16
CCM0830R*51	Remote	962 (437)	790 (359)	20.3	n/a	4.9	15031	230/50/1	13.1	16

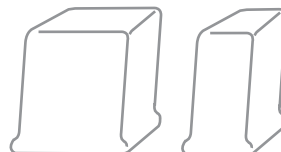
MODEL NO.	Description	Shipping Weight lbs. (Kgs.)
RC08002	Remote Condenser for 1 model CCM0830R (208-230/50-60/1 voltage)	95 (43)

See Bin specification sheet for information on ice storage bins  
 \* Represents cube size. For full cube substitute an "F", for half cube substitute an "H".  
 Please note: air-cooled units require 6" (152 mm) clearance for air intake and exhaust.

**TECHNICAL SPECIFICATIONS**

NUMBER OF WIRES . . . . . 3  
 SHIPPING WEIGHT LBS (KGS.) . . 210 (96) - 220 (100)

AGENCY LISTINGS . . . . .



Cube Size:	Width	Depth	Height
Full	7/8" (22mm)	7/8" (22mm)	7/8" (22mm)
Half	3/8" (10mm)	7/8" (22mm)	7/8" (22mm)

